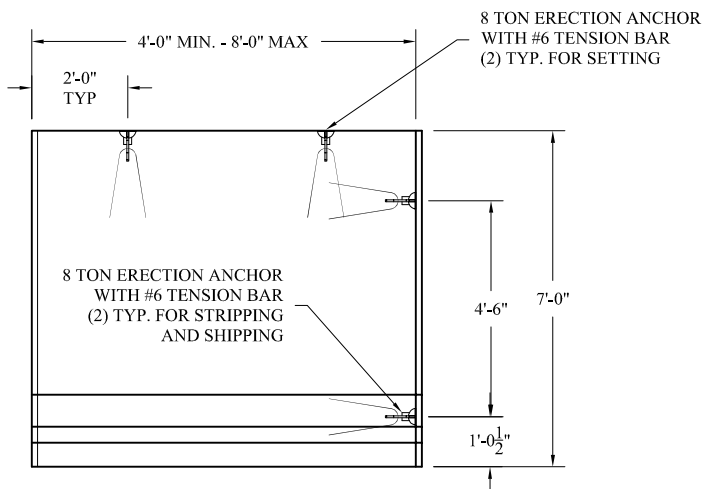
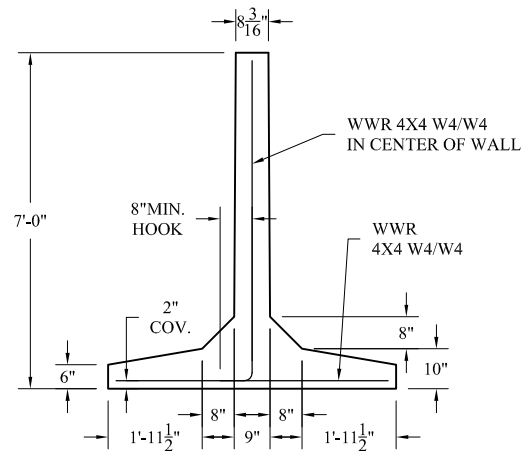


PLAN VIEW



ELEVATION VIEW



SECTION VIEW

GENERAL NOTES:

1. CONCRETE: 5,000 PSI @ 28 DAYS.
2. AIR: 6% ± 2%.
3. REINFORCING: ASTM A-615 GRADE 60.
4. WEIGHT: 1,385 LBS. PER LF

**NCI**

Norwalk Concrete Industries

80 Commerce Drive  
Norwalk, Ohio 44857  
www.nciprecast.com

Toll Free 800.733.3624  
Phone 419.668.8167  
Fax 419.663.0627

7'-0" PRECAST  
BARRIER WALL

REVISIONS:	DWG:	DATE:	SHT. -
02.17.16	TW-0003-14	09.26.14	OF -
			JRB