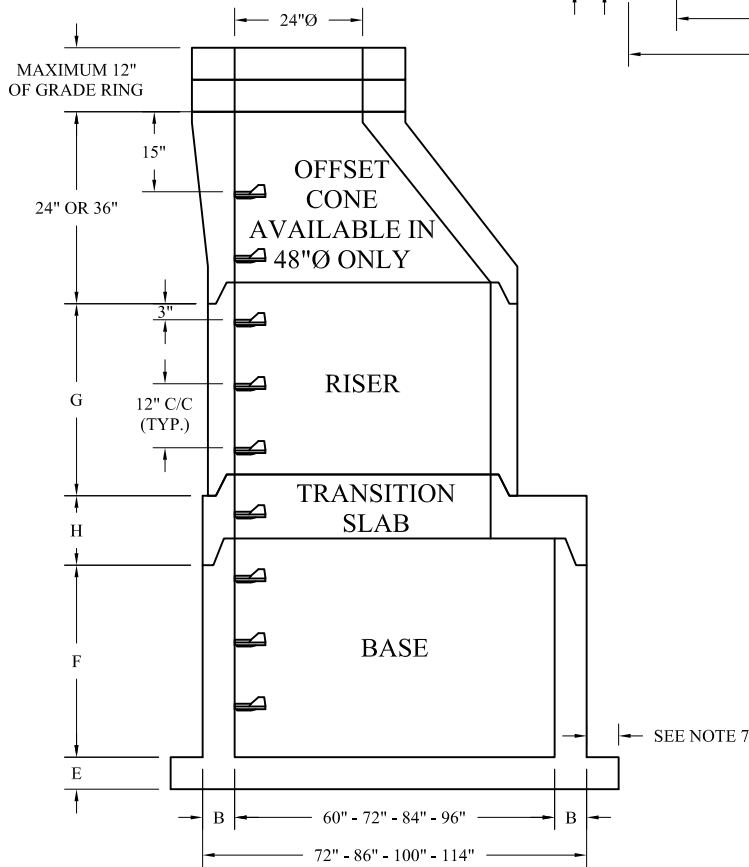
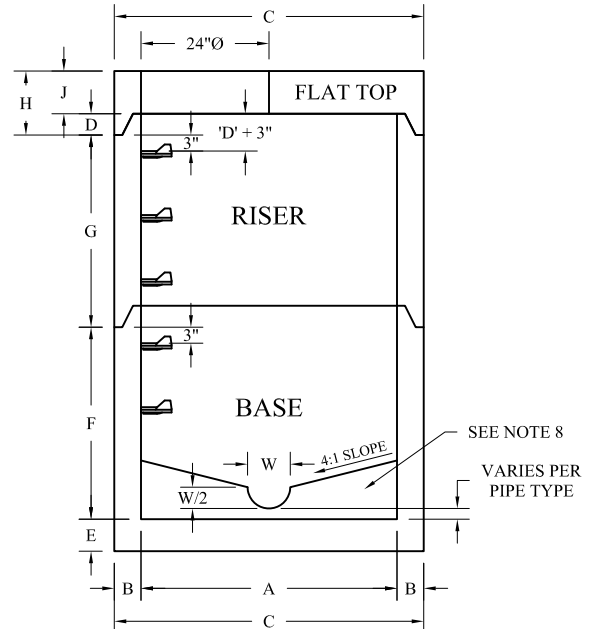


96"Ø BASE DETAIL



SECTION



SECTION

A	B	C	D	E	F	G	H	J	RISER WEIGHT	CAPACITY
36"Ø	4"	44"	1.5"	6"	60" MAX	58.5" MAX	7.5"	6"	524 LBS./FT.	53 GAL./FT.
48"Ø	5"	58"	4.25"	6"	66" MAX	72" MAX	12"	8"	867 LBS./FT.	94 GAL./FT.
60"Ø	6"	72"	4.75"	8"	60" MAX	60" MAX	13"	8"	1295 LBS./FT.	147 GAL./FT.
72"Ø	7"	86"	5"	8"	72" MAX	72" MAX	13"	8"	1809 LBS./FT.	211 GAL./FT.
84"Ø	8"	100"	5"	8"	96" MAX	96" MAX	18"	13"	2408 LBS./FT.	288 GAL./FT.
96"Ø	9"	114"	5"	10"	96" MAX	96" MAX	19"	14"	3092 LBS./FT.	375 GAL./FT.
120"Ø	11"	142"	6"	12"	84" MAX	96.75" MAX	18"	8"	4715 LBS./FT.	587 GAL./FT.
144"Ø	12"	168"	7"	12"	79" MAX	91" MAX	25"	8"	6123 LBS./FT.	846 GAL./FT.

GENERAL NOTES:

1. CONCRETE: 5,000 PSI @ 28 DAYS MIN.
2. DESIGN AND CONSTRUCTION CONFORMS TO ASTM C-478.
3. RUBBER GASKET JOINT CONFORMS TO ASTM C-443 AND STANDARD WITH SANITARY MANHOLES.
4. MASTIC JOINT CONFORMS TO ASTM C-990 AND IS STANDARD WITH STORM MANHOLES.
5. PIPE GASKETS, IF REQUIRED, PER ASTM C-923.
6. STEPS: STEEL REINFORCED POLYPROPYLENE @ 12" O.C.
7. STEPS: WHEN FLAT TOP IS USED, THE DIMENSION FROM THE TOP OF MANHOLE JOINT TO TOP OF UPPERMOST STEP IS TO BE 'D' + 3".
8. 6" BASE EXTENSIONS ARE AVAILABLE PER REQUEST.
9. FORMED INVERTS MAY BE AVAILABLE FOR SANITARY AND STORM MANHOLES, PLEASE INQUIRE.
10. SEE NCI STANDARD DRAWING D-0004-02 FOR "OUTSIDE DROP" MANHOLE COMPONENTS.
11. CAST IRON FRAME AND COVER/GRATE AVAILABLE UPON REQUEST.

NCI
 Norwalk Concrete Industries
 80 Commerce Drive
 Norwalk, Ohio 44857
 www.nciprecast.com
 Toll Free 800.733.3624
 Phone 419.668.8167
 Fax 419.663.0627

ROUND MANHOLE COMPONENTS

REVISIONS:	DWG:	DATE:	SHT. 1
11.08.18	D-0001-18	02.18.02	OF 1
			RJS