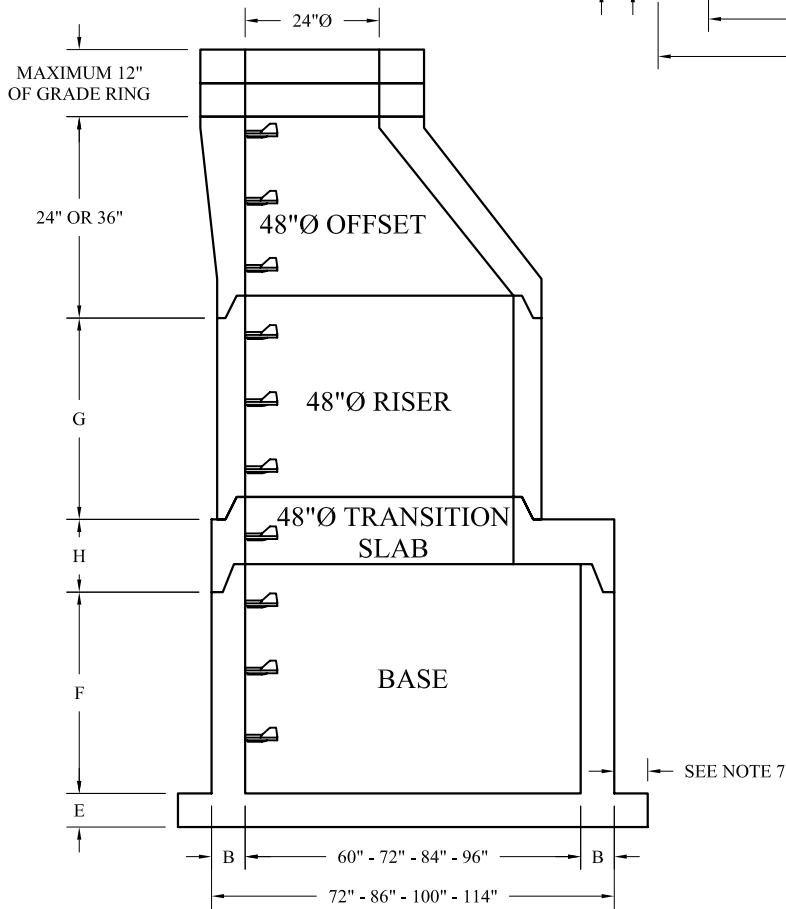
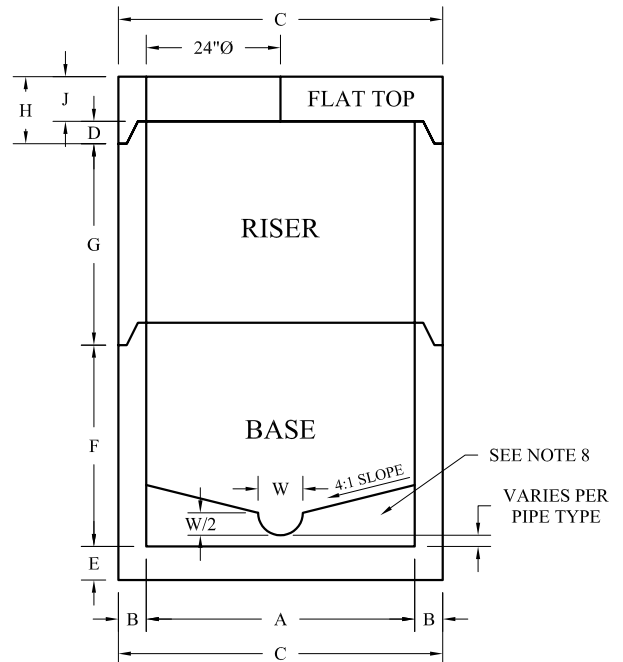


96"Ø BASE DETAIL



SECTION



SECTION

A	B	C	D	E	F	G	H	J	RISER WEIGHT	CAPACITY
48"Ø	5"	58"	4 ¹ / ₄ "	6"	66" MAX	72" MAX	12"	8"	867 LBS./FT.	94 GAL./FT.
60"Ø	6"	72"	4 ³ / ₄ "	8"	60" MAX	60" MAX	13"	8"	1295 LBS./FT.	147 GAL./FT.
72"Ø	7"	86"	5"	8"	64" MAX	72" MAX	13"	8"	1809 LBS./FT.	211 GAL./FT.
84"Ø	8"	100"	5"	8"	86" MAX	96" MAX	17"	12"	2408 LBS./FT.	288 GAL./FT.
96"Ø	9"	114"	5"	10"	88" MAX	96" MAX	18"	12"	3092 LBS./FT.	375 GAL./FT.

GENERAL NOTES:

1. CONCRETE: 5,000 PSI @ 28 DAYS MIN.
2. DESIGN AND CONSTRUCTION CONFORMS TO ASTM C-478.
3. RUBBER GASKET JOINT CONFORMS TO ASTM C-443 AND STANDARD WITH SANITARY MANHOLES.
4. MASTIC JOINT CONFORMS TO ASTM C-990 AND IS STANDARD WITH STORM MANHOLES.
5. PIPE GASKETS, IF REQUIRED, PER ASTM C-923.
6. STEPS: STEEL REINFORCED POLYPROPYLENE @ 12" O.C.
7. 6" BASE EXTENSIONS ARE AVAILABLE PER REQUEST.
8. FORMED INVERTS MAY BE AVAILABLE FOR SANITARY AND STORM MANHOLES, PLEASE INQUIRE.
9. SEE NCI STANDARD DRAWING D-0004-02 FOR "OUTSIDE DROP" MANHOLE COMPONENTS.
10. CAST IRON FRAME AND COVER/GRATE AVAILABLE UPON REQUEST.

NCI
 Norwalk Concrete Industries
 80 Commerce Drive
 Norwalk, Ohio 44857
 www.nciprecast.com

Toll Free 800.733.3624
 Phone 419.668.8167
 Fax 419.663.0627

ROUND MANHOLE COMPONENTS

REVISIONS:	DWG:	DATE:	SHT. -
08-24-06	D-0001-02	02-18-02	OF -
			RS